

**Relentless Innovation**  
for your diagnostic confidence

**SAMSUNG**


# Mobile Excellence

## HM70 EVO

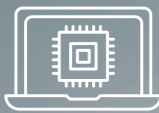


# Mobile Excellence


The HM70 EVO ultrasound system is a high-performance hand-carried ultrasound system, evolved to support a diverse range of applications and patients. The system has streamlined workflow, durability, and high resolution imaging that can be used in a variety of clinical situations. Samsung has harmonized the key aspects of the HCU to meet today's changing needs and provide healthcare professionals the confidence they need in their work environment.




**Versatility**  
Supports various applications and patient types




**Stability**  
Stable performance migrating Samsung cart-based imaging engine



**Intuitiveness**  
Intuitive interfaces for enhanced usability



**Durability**  
Stiffness improved by 38% for various environmental usage



**Mobility**  
Go almost a whole working day on a single charge

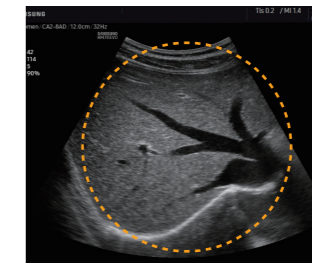


# Imaging with exceptional quality

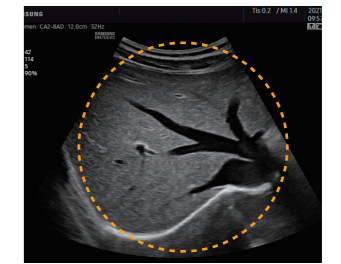
Exceptional image clarity and penetration is adapted from Samsung's high-end imaging platform to produce clear, uniform, high resolution 2D and color images. The HM70 EVO delivers sophisticated imaging technologies to empower ultrasound professionals with diagnostic confidence wherever needed.

## Noise reduction filter to improve 2D image quality

The noise reduction filter improves edge enhancement and creates sharp 2D images for optimal diagnostic performance. In addition, **ClearVision** provides application-specific optimization and advanced temporal resolution in live scan mode.



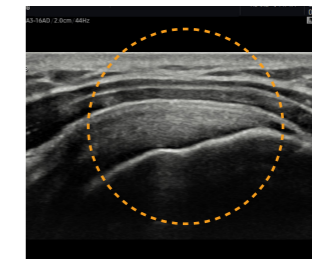
Liver



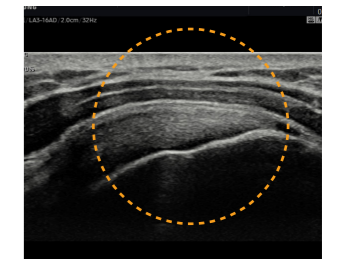
Liver with ClearVision

## Clarify blurred area to provide clearer images

**HQ-Vision™ 1** provides clear images by mitigating the characteristics of ultrasound images that are slightly blurred than the actual vision.



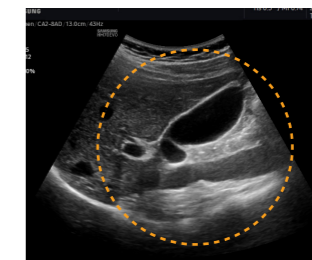
Shoulder



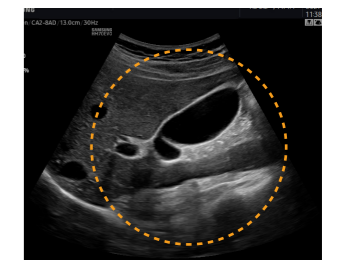
Shoulder with HQ-Vision™

## Uniform imaging performance of overall image area from near-to-far

**S-Harmonic™** mitigates the signal noise, enhances contrast, and provides uniform image performance of overall image area from near-to-far.



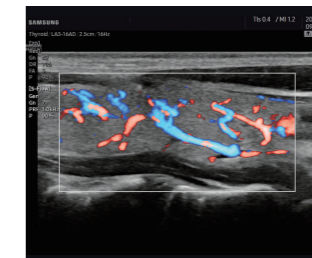
Gall bladder



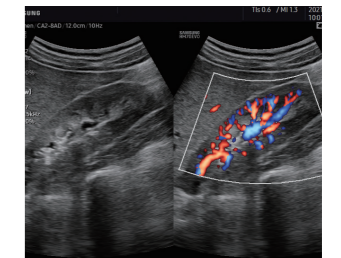
Gall bladder with S-Harmonic™

## Directional power Doppler to examine peripheral vessels

**S-Flow™** uses directional power Doppler technology, enabling you to examine even the peripheral vessels. It displays information on the intensity and direction of blood flow.



Thyroid with S-Flow™



Kidney with S-Flow™ in Dual Live



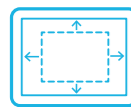
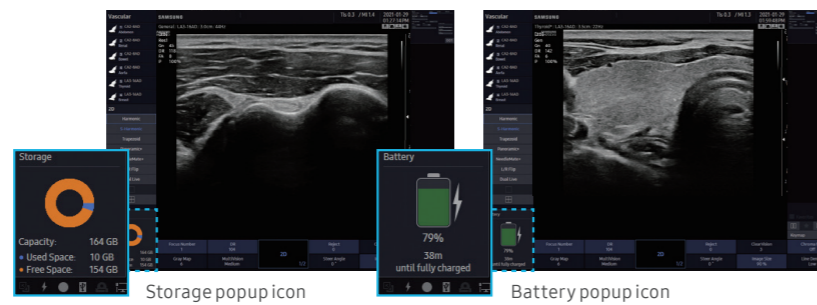
# Increased Operational Efficiency

The simple, intuitive interfaces enable users to immediately get to work in emergency situations. The HM70 EVO is engineered to provide the most direct interfaces and smooth actions from anywhere, avoiding delays caused by configuration. Samsung has considered even the smallest details of usability to support users with the exceptional possible performance.



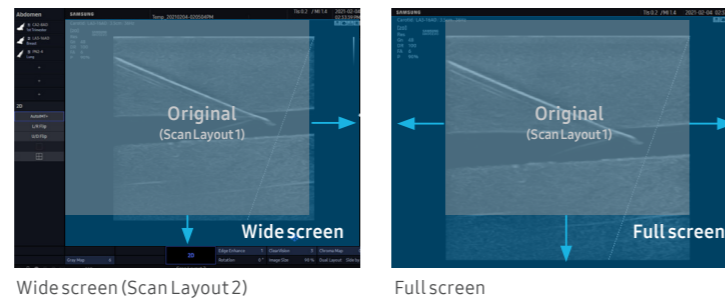
## Intuitively tuned interfaces

Intuitive buttons and screen layouts are optimized to express information clearly and enable complex actions to be simply performed.



## View images and cines in full screen

In the Full screen mode, the ultrasound examination can be performed while viewing the image/cine that is fully expanded to the entire monitor.



## Quickly exam even in an emergency case

In case of emergency, the **QuickExam** function allows to begin an exam with a temporary ID and patient information can be modified after the exam.

## Select your transducer and preset combination with one touch

With one touch, the user can select the most common transducer and preset combinations. **QuickPreset** increases efficiency to make a full day of scanning simple and easy.

## Save image data directly to USB memory

**QuickSave** function allows image data to be saved directly on USB memory during the exam.

## Build predefined protocols to ensure every step is followed every time

**EzExam+™** enables users to build or to use predefined protocols. It transforms the ultrasound investigation into a streamlined process. EzExam+™ ensures the full investigation is performed, eliminating the risk of forgetting an image or loop capture, as well as measurement and transducer preset changes.

## Provide valuable reference tool to help in scanning

As a reference tool for plane scanning, **EzAssist™** has multiple clinical applications during live scanning. This allows clinicians to practice procedures using valuable reference materials such as clinical reference images and animation.

# Highly Usable Design

The wave pattern of the exterior surface and the honeycomb structure of the internal design communicate strength and confidence to the healthcare professionals. The magnesium case surrounding the system and enhanced battery performance offer true usability and endurance.



Protect your system against damage from knocks and drops with the durable cover

Considering the importance of durability in a system that needs to be moved frequently, exterior wave pattern and interior honeycomb structure have been incorporated in the design to improve the rigidity of the casing by 38%\*.

\* Compared to the Samsung ultrasound HM70A.



Protect your system from dust, liquids, and other contaminants with KeySkin<sup>1</sup>



## 1 Go almost a whole working day on a single charge<sup>1,3</sup>

The battery lasts approximately 7.5 hours with the extended power pack. This is more than 100% longer than the previous model, expanding its deployment range.



## 2 Connect up to 3 transducers and save your time from switching over transducers<sup>1</sup>

You can connect up to three transducers at once using the extended transducer ports on the optional cart, saving time and effort spend switching transducers in situations where every second counts.



## 3 Convenient carrying case safely protects the system with shockproof cushion<sup>1</sup>

The carrying case allows you to safely and conveniently transport your whole package, including ultrasound system, transducers, and other accessories.

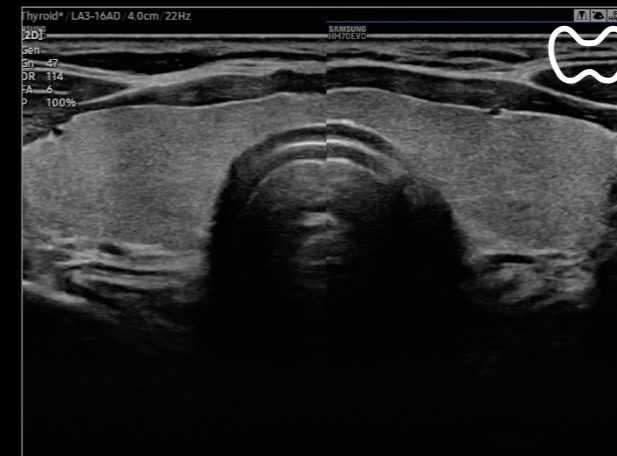




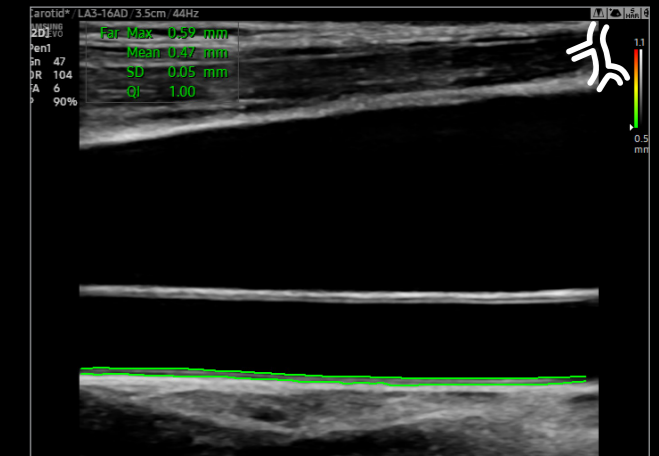
# Available in Various Clinical Environment



The HM70 EVO supports a wide range of clinical applications, environments, and patient types—including abdomen, cardiac, vascular, musculoskeletal, breast, emergency, and small parts. Especially, HM70 EVO reinforces the EM application with Lung and FAST presets. The versatility enables healthcare professionals to perform effectively on targeted examinations.



Thyroid with ClearVision



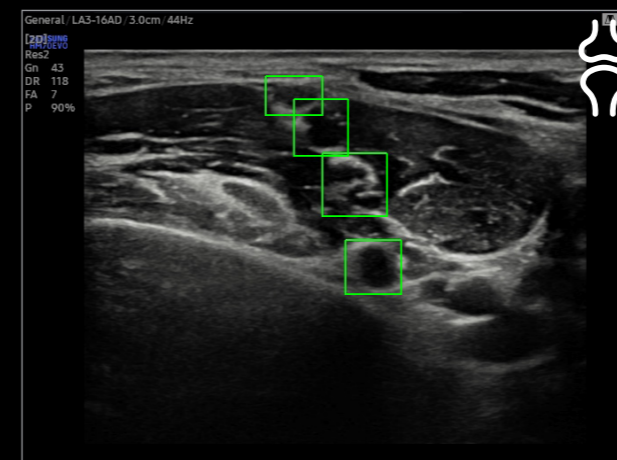
IMT measurement with AutoIMT+<sup>1</sup>



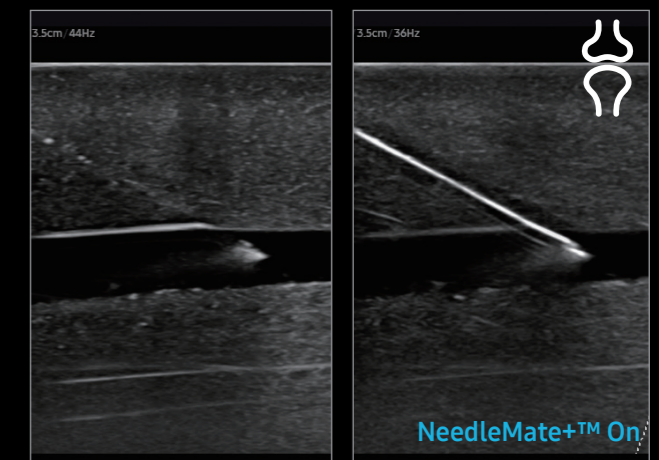
A-Line with Lung preset



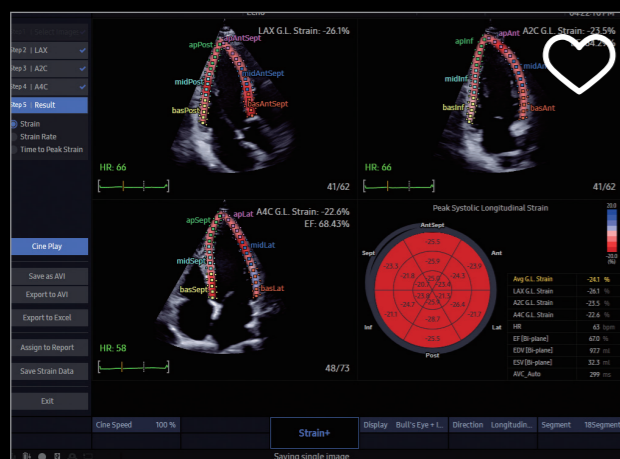
Morison's Pouch in FAST examination



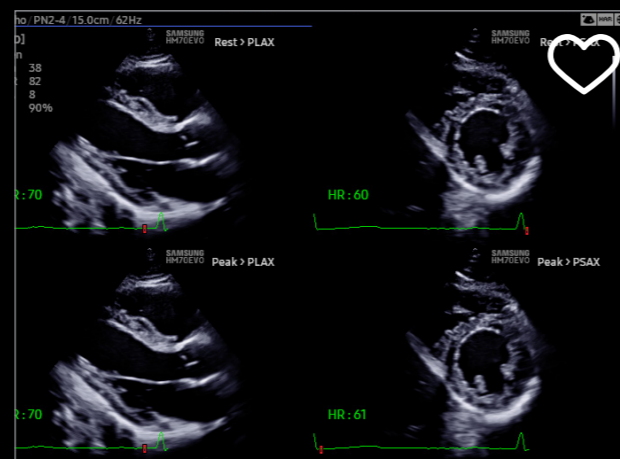
Interscalene brachial plexus using NerveTrack™<sup>1</sup>



Visualization of Needle using NeedleMate+™<sup>1</sup>



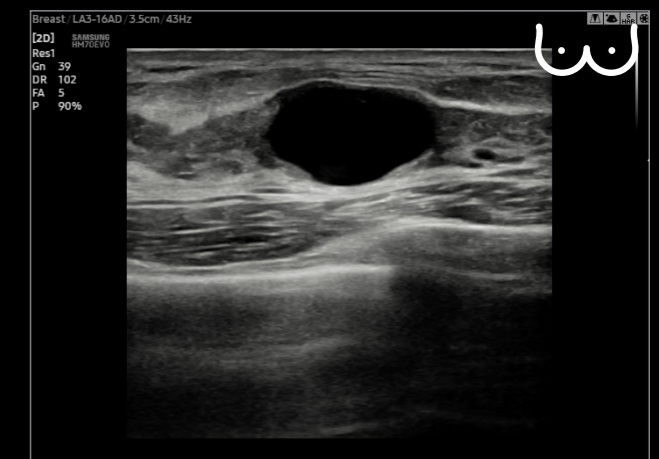
Wall motion measurement by Strain+<sup>1</sup>



StressEcho<sup>1</sup>



Strain ratio calculation with E-Strain™<sup>1,2</sup>



Breast cyst in 2D

# Comprehensive selection of transducers

## Curved array transducers



**CA1-7AD**  
Abdomen, gynecology, obstetrics, pediatric, musculoskeletal, vascular, urology, emergency



**C2-8**  
Abdomen, obstetrics, gynecology, pediatric, musculoskeletal, vascular, urology



**CA2-8AD**  
Abdomen, obstetrics, gynecology, pediatric, musculoskeletal, vascular, urology, emergency



**CA4-10M**  
Pediatric, vascular, abdomen, obstetrics, gynecology, musculoskeletal, urology, emergency

## Endocavity transducer



**EVN4-9**  
Obstetrics, gynecology, urology

## Volume transducers



**VN4-8**  
Abdomen, obstetric, gynecology, musculoskeletal, pediatric, vascular, urology



**EV2-10A**  
Obstetrics, gynecology, urology

## Linear array transducers



**LA3-16AD**  
Small parts, vascular, musculoskeletal, abdomen, obstetrics, gynecology, pediatric, emergency



**LN5-12**  
Small parts, vascular, musculoskeletal, abdomen, obstetrics, gynecology, pediatric



**LA2-9S**  
Abdomen, obstetrics, gynecology, musculoskeletal, small parts, vascular, pediatric



**LS6-15**  
Abdomen, obstetrics, gynecology, musculoskeletal, small parts, vascular, pediatric



**LA3-22AI**  
Musculoskeletal, small parts, vascular, pediatric, dermatology



**L3-22**  
Musculoskeletal, small parts, vascular, pediatric, dermatology

## Phased array transducers



**PA1-5A**  
Abdomen, cardiac, vascular, pediatric, TCD, emergency



**SP3-8**  
Abdomen, cardiac, vascular, pediatric, TCD, emergency



**PN2-4**  
Abdomen, cardiac, vascular, pediatric, TCD, emergency



**PA3-9B**  
Abdomen, cardiac, vascular, pediatric, TCD, emergency

## CW transducer



**DP2B**  
Cardiac, vascular

## TEE transducer



**MMPT3-7**  
Cardiac

## Samsung Healthcare Cybersecurity

To address the emerging need for cybersecurity, Samsung provides a solution to support our customers by offering the tools to protect against cyberthreats that may compromise invaluable patient data and ultimately degrade the quality of care.



Intrusion Prevention



Access Control



Data Protection

\* This product, features, options, and transducers are not commercially available in all countries.

\* Sales and Shipments are effective only after the approval by the regulatory affairs. Please contact your local sales representative for further details.

\* This product is a medical device, please read the user manual carefully before use.

1. Optional feature which may require additional purchase.

2. Strain value for ElastoScan™ is not applicable in Canada and the United States.

3. It is assumed that the average working hours per day is 8 hours. This is based on internal study and compared to the previous model, HM70A. The 7.5 hours of battery life is the combined battery life of the system and extended power pack.

4. S-Vue Transducer™ is the name of Samsung's advanced transducer technology.

## SAMSUNG MEDISON CO., LTD.

© 2023 Samsung Medison All Rights Reserved.

Samsung Medison reserves the right to modify the design, packaging, specifications, and features shown herein, without prior notice or obligation.

CE 0123